

# CLEARFIL™ AP-X Esthetics

## SIMPLE & NATURAL

CLEARFIL™ AP-X Esthetics is hardly distinguishable for its perfect match of light diffusion and transparency as natural tooth. Just select single shade and apply it. No need of multi-layering.

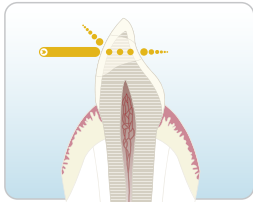


By courtesy of Dr. Montri Chantaramungkorn, DDS, FRCDT, TBOD Chiang Mai University, THAILAND.

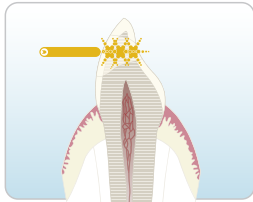


## Light-diffusion like tooth

With CLEARFIL™ AP-X Esthetics, the optical properties of natural tooth can be faithfully reproduced. Cavity margins can not be recognized after treatment, unlike with conventional composites.



Most composites transmit light directly



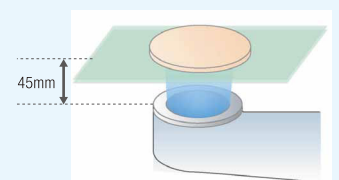
CLEARFIL™ AP-X Esthetics diffuses light naturally

Natural tooth absorbs light and diffuses it in all directions. Due to its unique composition, CLEARFIL™ AP-X Esthetics offers nearly identical properties. Conventional composites, on the other hand, often appear darker than natural tooth, as they transmit light and do not diffuse it.

## Light Diffusion Property

	Product A	CLEARFIL™ AP-X	CLEARFIL™ AP-X ESTHETICS	Bovine Tooth
SAMPLES ON CONTRAST BACKGROUND				
BEFORE IRRADIATION				
POSITIVE VIEW WHILE IRRADIATION				
NEGATIVE VIEW WHILE IRRADIATION				

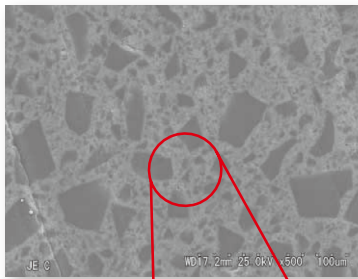
Composite Resin discs appearance while being irradiated by an LED light activation unit positioned 4.5mm below the disc. The outline of the light guide tip is easily observed for the light transmitting product but the CR disc shows a uniform appearance for CLEARFIL™ AP-X Esthetics ( Source : Kuraray Noritake Dental Inc. ).



Sample Thickness : 0.25mm  
 Glass Plate Thickness : 2mm  
 Light Activator : L.E.Demetron I

## GOOD RADIOPACITY & FLUORESCENCE

- Due to its radiopacity, the resin can easily be located.
- CLEARFIL™ AP-X Esthetics is fluorescent.



### Light-diffusive filler

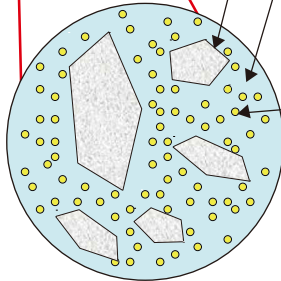
Newly developed organic filler including nanofillers with high transparency. It diffuses light like natural tooth.

### Highly refractive index matrix

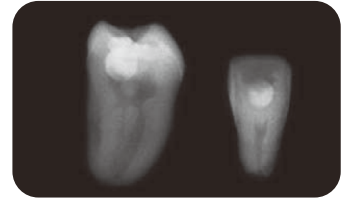
The matrix shows a high refraction, which reduces color change after polymerization.

### Radiopaque nanofiller

Thanks to this new filler CLEARFIL™ AP-X Esthetics can be clearly recognized on an X-ray and can also be polished to a high shine.



### Radiopacity



### Fluorescence



## STABILITY IN COLOR & TRANSPARENCY

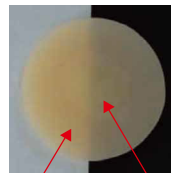
CLEARFIL™ AP-X Esthetics merely changes its color after light-curing. It makes your work easier. Other esthetic composites usually have the tendency of color and transparency change after their polymerization.

### CLEARFIL™ AP-X Esthetics

### CLEARFIL™ AP-X

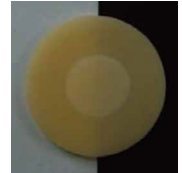
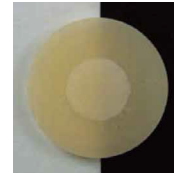
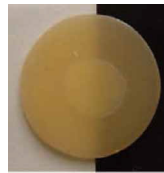
### Product B

### Product C



After light-curing

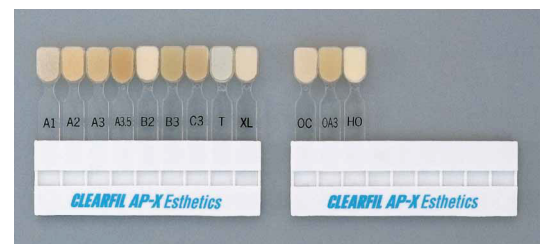
Before light-curing



#2720-WD CLEARFIL™ AP-X Esthetics Kit (4 shades)	#2729-WD CLEARFIL™ AP-X Esthetics C3 (3.6g/2.0ml)
#2722-WD CLEARFIL™ AP-X Esthetics A1 (3.6g/2.0ml)	#2730-WD CLEARFIL™ AP-X Esthetics T (3.7g/2.0ml)
#2723-WD CLEARFIL™ AP-X Esthetics A2 (3.6g/2.0ml)	#2732-WD CLEARFIL™ AP-X Esthetics XL (3.6g/2.0ml)
#2724-WD CLEARFIL™ AP-X Esthetics A3 (3.6g/2.0ml)	#2733-WD CLEARFIL™ AP-X Esthetics OC (3.6g/2.0ml)
#2725-WD CLEARFIL™ AP-X Esthetics A3.5 (3.6g/2.0ml)	#2735-WD CLEARFIL™ AP-X Esthetics OA3 (3.6g/2.0ml)
#2727-WD CLEARFIL™ AP-X Esthetics B2 (3.6g/2.0ml)	#2737-WD CLEARFIL™ AP-X Esthetics HO (3.6g/2.0ml)
#2728-WD CLEARFIL™ AP-X Esthetics B3 (3.6g/2.0ml)	#2721-WD CLEARFIL™ AP-X Esthetics Shade Guide

## COMPOSITE SHADE GUIDE

CLEARFIL™ AP-X Esthetics shade guide is made of real CLEARFIL™ AP-X Esthetics composite itself. This helps your shade selection.



- Read the Instruction for Use supplied with the product before use.
- The measurement data contained in this brochure are obtained by the results of tests performed by Kuraray Noritake Dental Inc.
- The colors of the product pastes and hardened products shown in this brochure may vary from the actual colors.
- The specifications and appearance of the product are subject to change without notice.

Kuraray Noritake Dental Inc.

Ote Center Bldg.  
1-1-3, Otemachi, Chiyoda-Ku, Tokyo 100-0004, Japan  
Website : <http://www.kuraraynoritake.com>

“CLEARFIL” is a trademark of Kuraray Co., Ltd.

<https://stomshop.pro>

6 / 2012-01