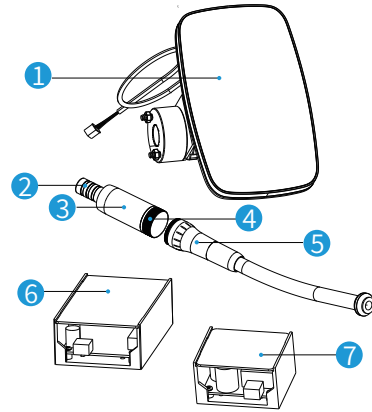


MX 2000 (Built-in)

Dental Electric Motor User Manual

1 Main spareparts packing list



- 1 Control panel
- 2 Disinfection Plug
- 3 Electric motor Handle
- 4 Disinfection cover
- 5 Tail line
- 6 Main controller
- 7 Electric board

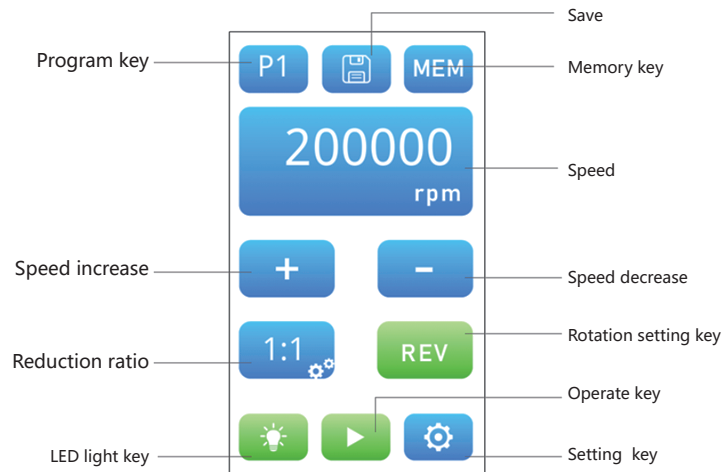
1

2 Technical Parameters

Items	Content
Model	MX 2000
Electric board power input	Electric board : AC24V , > 100W
Electric board power output	Electric board DC 32V , 3.5A
Main controller power input	DC 32V , >3A
Applied part	B
Speed Range	5000-40000rpm
Torque	3.2N-cm
Rotation mode	Forward (clockwise) Reverse (counter clockwise)
operating mode	Intermittent operation, run for 8 minutes and stop for 1 minute
Operating conditions	Ambient temperature: 5°C~40°C Relative humidity: <80% Operating altitude: <2000m
Transport and storage conditions	Ambient temperature: -20°C~+55°C Relative humidity: 20% ~ 80% Atmospheric: 70kPa~106 kPa

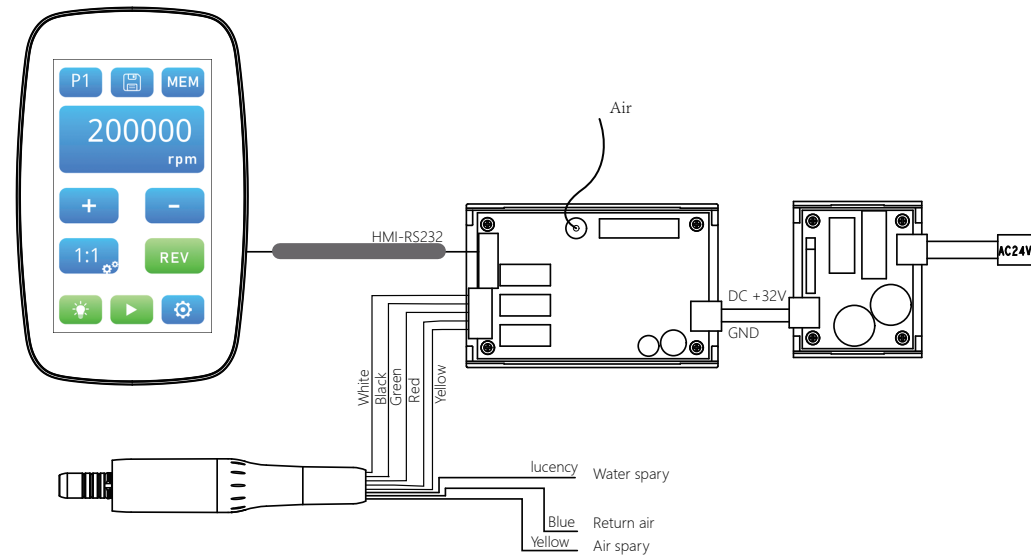
2

3 Operation panel



3

4 Installation Guide



4

5 Panel button function

Main interface

• 5.1 Program key



After pressing the program number, you can choose a different program number [P1-P5]

• 5.2 Data save key



After pressing it, the parameters set by the current program number can be saved

• 5.3 Memory program selection



After pressing the memory program, you can quickly select the corresponding program number

• 5.7 LED light switch



Touch to open or close the handle LED

• 5.8 Start



Long Pressing can start the motor; or when there is air pressure, it will start automatically

• 5.9 Setting



• 5.4 Speed adjustment button



Press the plus and minus buttons to adjust the current speed. , under different reduction ratios, the speed range is different

Reduction ratios	Minimum speed rpm	Maximum speed rpm
1:1	5000	40000
1:5	20000	200000
1:4.2	21000	168000
16:1	400	2500
20:1	250	2000

5

After pressing, enter the system setting interface



Here you can set

1. The strength of the LED light intensity of the handle
2. The delayed lighting time of the handle LED after the motor stops
3. Long press "Reboot" to restart the device

7

• 5.5 Direction KEY



Rotation direction can be adjusted



Forward



Reverse

• 5.6 Reduction ratios setting



After pressing, enter the reduction ratio setting button, you can choose a different reduction ratio



6

6 Maintenance

Cleaning and Disinfection			
Step	Operation	Sparepart	Content
1	Clean	Motor handle Control panel Tail line	Clean all parts with a damp cloth to remove visible residue from surfaces
2	Disinfection	Motor handle Control panel Tail line	Wipe the surface of the parts with gauze soaked in alcohol (alcohol content 70-80 vol%) for disinfection
3	Package	Motor handle	Use the sterilized plugs and sterilized kits included in the accessories to be inserted into the two ends of the motor Components to be sterilized are packaged in special steam sterilization bags according to EN 868-5
4	Sterilization	Protective sleeve	Steam sterilization at 134°C for at least 6 minutes. Dry and cool for at least 10 minutes after sterilization
5	Storage		Keep the sterilized accessories in the special sterilization bag and store them in a dry and clean environment. Check the integrity of the packaging before use and within the expiry date specified in the sterilization bag.
<p>Warning</p> <ul style="list-style-type: none"> • Before sterilization, the disinfection plug and the disinfection sleeve should be installed, and the installation should be placed as shown in the picture • Do not use disinfectants except alcohol for disinfection • Prevent alcohol from penetrating into the parts to prevent damage to parts • Sanitize before first use and after finished each use • Do not prime the motor with oil as this may damage the unit 			

8