

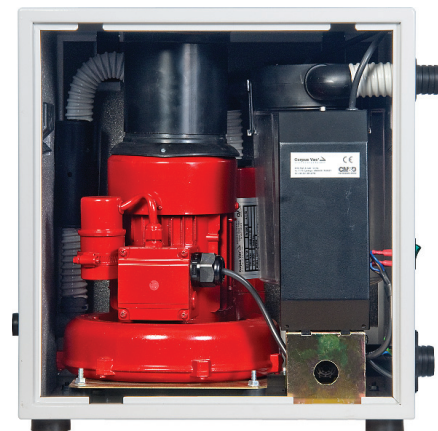
Midi



Caution: Live parts inside.
Disconnect supply before opening the covers.

Midi

- Corpus Midi is the compact, handsome member of Corpus Vacuum system and equipment. The unit is designed to serve one or two surgery by strong vacuum power.
- Midi is manufactured under Corpus Vacuum's quality control and in accordance with CE standart.
- The compact body of surgical device has dimensions are d:31, h:43, w:40 cm. it's more ergonomic to locate as close as possible to the dental unit and to the left side of the dental chair.
- Its cabinet is designed for maximum ergonomy and minimum acustic and noise level. The cabinet is produced for maksimum air circulation against heating by the vacuum motor.
- Cabinet surface is painted electrostatic epoxy and has smooth, bright and hygenic surface. Also the other parts are galvanized for corsion free. The standart color is RAL 9016 white.
- Corpus Vac MIDI has a non - stop air ring vacuum motor as all Corpus member. The motor's power is 0,450 kW /60 Hz, 0,370 kW /50 Hz and it can transfer 1300 liters air per minute. It can work continuously 8-10 hours.
- All system (air/secration separator with electronic level control and automatic auxilliary draining pump is controlled by high- tech electronic board. The system is protected against electro-shock.
- Midi surgical aspirator (Midi high vacuum system) has anti vibration system and silencer for the exhauster air and non stop suction motor's noise. The exhaust prevent the contamination of dirty air.



Corpus Midi has new model coarse filter (OPTIONAL) for to hold big particulles and inlay and onlay. The filter's installation, maintenance and cleaning are very easy and quickly. Also the filter can be installe to be 90 or 180 degrees.



Midi for 1-2 dental unit



High tech electronic board



Coarse Filter (Optional)



Easily and daily cleaning