





WHOWEARE



Vision: "To be recognized worldwide for developing and offering intelligent solutions in the health area"

Mission: "Continuously seek leadership in the health area, acting in a cordial, ethical, honest, professional and sustainable manner, promoting the development of people and offering intelligent solutions for the well-being of society."

Values: Cordiality, People Development, Ethics, Honesty, Leadership, Professionalism and Sustainability.

BIO-ART was founded on August 18, 1977, through the entrepreneurship of Mr. Germano José Piccin, starting with the production of articulators. Since the first order, the philosophy has been: "Innovate, listening to the opinion-forming public and developing products that meet the needs of the market". Following this philosophy, BIO-ART has grown and developed knowing that being a leader means dictating trends, developing and delivering intelligent solutions for the health and well-being area. This philosophy has led the Company to continually invest in innovative technology and training people to improve the quality of its products and processes. The quality management system has ISO 9001 and ISO 13485 certificates issued by TÜV and most of its products have CE certification as well as FDA registration.

The company leads the Brazilian market in almost everything it produces. Its leadership position is also evidenced in the international market with the production of semi-adjustable articulators, reaching approximately 400,000 units sold worldwide and ranked among the top 3 for vacuum machines. Sales extend to more than 70 countries on all continents, with Latin America standing out with the largest market share of articulators. The best recognition, however, lies in customer satisfaction. In essence, BIO-ART provides products with the best cost/benefit ratio and strives for excellence in all markets in which it operates, employing the most qualified professionals and keeping in touch with market needs. For all this, BIO-ART was proudly recognized by the Apex-Brasil Award for Excellence in Exports, at an event held in May 2014. The award takes place every two years and is the most important for international trade in Brazil.

Semi-Adjustable Articulators

The Bio-Art articulators were developed based on research in the main national and international dental schools and joined the essential features required by opinion-markers, ensuring quickness and high quality in occlusal, rehabilitation, aesthetic and functional workings. Its innovative design allows a wide visibility of plaster casts from all angles, adapting to different working positions such as 45° inclination. The A7 models allows 180° opening between the frames, without separating them. The mounting plate fixation system is magnetic, which eliminates the need for screws and makes the process faster and more practical.



Wide visibility



45° Inclination



180° Opening



Rail mounting plate

A7Plus

With condylar guide and Bennett angle adjustments, the A7 Plus is ideal for academic and professional workings.



Curved condylar guide



Condylar guide and Bennett angle adjustments



Central Lock



Plastic Case



A7Fix

The measures of the A7 Fix articulator are set at average standards, allowing more practical and faster work. Unique in the world with magnetic condylar guide (built-in magnetic disc - exclusive Bio-Art system), provides stability during articulating movements, eliminating the needs for springs and elastics.



Curved condylar guide



Central lock



Angles set at averages
Bennet 15° and
Condylar guide 30°



Carton box



4000-S

The most traditional model; provides the key features of a semi-adjustable articulator, including intercondylar distance adjustment via micrometric expanding spindle.



Stabilization System**
(O'ring)



Expanding spindle for
condylar distance adjustment



Condylar guide and
Bennett angle
adjustments



Plastic Case



Comparative table between the models

Model	4000-S	A7 Fix	A7 Plus	A7 Plus-E
Classification	Semi adjustable / Arcon	Semi adjustable / Arcon	Semi adjustable / Arcon	Semi adjustable / Arcon
Condylar Guide	Adjustable / Curved	Fixed at 30° / Curved	Adjustable / Curved	Adjustable / Flat
Bennet Angle	Adjustable	Fixed at 15°	Adjustable	Adjustable
Intercondylar Distance	Adjustable	Fixed at 110mm	Fixed at 110mm	Fixed at 110mm
Central Lock*	No	Yes	Yes	Yes
Stabilization System**	O` ring	Magnetic	Silicone Connection	Spiral springs
Plate Fixation	Magnetic / Screw	Magnetic / Screw	Magnetic / Screw	Magnetic / Screw
Frame Opening	Partial	180° without separation	180° without separation	180° without separation

* Function of keeping both frames aligned, allowing only the vertical movement.

** Joining system between the upper and lower frames provides stability during articulating movements.

ACCURATE TRANSFER

The A7 Plus and A7 Fix articulators can be standardized (calibrated) by the manufacturer to allow interchangeability of the casts among these articulators models. The use of interchangeable articulators facilitates the work between the dental office and lab once the dentist is no longer required to send the articulator to the lab and vice-versa. In other words, it is just necessary to send the plaster cast since it fits perfectly in the standardized articulator, maintaining the initial assembling relation and alignment between the casts and articulator.

The standardization system does not interfere in the assembling procedures. The dentist and prosthetic can keep its conventional working methods.

Standardization



Calibration



Checking



Compensating Disc

FaceBows

EliteModel

The new Elite Face-Bow brings an articulated and fixation system for the fork that allows a faster registration process for the professional and comfortable for the patient. It has a jig transfer assembly that eliminates the needs for face-bow in the assembling process of the casts in the articulator, turning the process faster, more practical and stable. Its Nazium Relator with adjustable height, including an infra-orbital indicator, turns the registration process more precise. The face-bow is equipped with a sliding system which allows smooth lateral movement (opening/closing) and facilitates the overall use. The ear pieces are anatomical, removable and chemically sterilized.



Patient registration



Jig transfer assembly



Articulator transfer

StandardModel

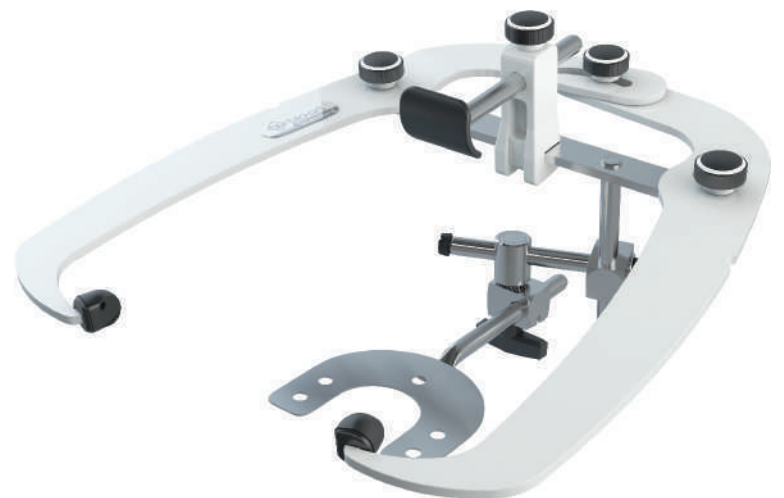
The registration transfer with the Standard model is made by fixing the entire facebow in the articulator.



Transfer to the articulator



Face-bow properly positioned



Accessories



Fork Support

Through its vertical adjustment, the fork support is used "as a wedge" during the mounting of the upper cast when it is performed with the face-bow. The fork support allows greater stability of the register, avoiding unpleasant distortions.



Camper's Table

Support used to a standardized mounting (15°) of the upper cast in the articulator. It has averages, laterals and anterior reference lines for plaster cast positioning (alignment). It is available in aluminum (anodized) and polymer.



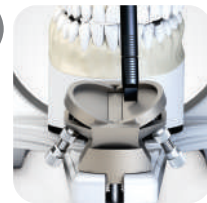
Toothless Fork

It is a Face-Bow accessory that holds two adjustable rim to adapt in the alveolar fold of totally edentulous (wax plan).



Adjustable Incisal Table (Metallic)

It is used in process of teeth balancing, allowing the personalization of the anterior guide through its lateral walls and antero-posterior adjustable plans.



Fox Ruler

It is used in the adjustment of the upper wax roller in total prostheses for determination of the occlusal (camper) and horizontal (interpupil) plans. Available in aluminum (anodized) and polymer.





Broadrick Flag

It is used for analysis and determination of posterior occlusal plan in oral rehabilitation cases.



Adjustable Platform

It is an accessory that allows repositioning of the casts in the articulator (Casts Surgery) with measures registration, granting faster, easier and secure visualization of the results.



Magnetic Plate

Offer a faster and practical work with several clinical cases at the same time. Eliminates the need for breaking the plaster casts.



Rail Mounting Plate

Offer a faster and practical work with several clinical cases at the same time. Eliminates the need for breaking the plaster casts.



PlastVac P7

Durability, power and distinctive design make the Bio-Art laminator a leader in the national market and among the 3 most sold in the world.

Practical and versatile, it allows the manufacture of trays of different materials up to 7mm thick and accepts round and square plates.

It has an excellent cost-benefit ratio. On average, the investment is recovered with the manufacture of 30 plates, saving time and money.



Fixation System of the rotary plate.

heating in both sides.



1400W motor with automatic activation.

Greater accuracy in model copy.



resistance of Carbon.

fast heating and plate uniform.



Door Model: function Flat and Mug.

Prevents distortions and facilitates model removal.



Main applications:

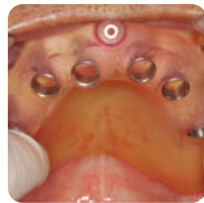
- Home whitening
- Mouth guard
- Bruxism plaque
- Myorelaxing plate
- Orthodontic appliances
- Invisible aligners
- Surgical guide
- Base plate
- Individual tray
- Matrix for composite resin
- Tray for fluoridation
- Confection of caps



Home whitening



Aligners invisible



Surgical guide



Sheets

Vacuum-packed and in metallic material, the Bio-Art plates are without any contact with the external environment, providing greater durability and reducing the possibility of the appearance of bubbles.

It has a great diversity of thicknesses and materials, allowing the most diverse applications. Available in round and square formats.

CRYSTAL (PET-G):.....0,3 / 0,75 / 1,0 / 1,5 / 2,0 / 3,0mm

SOFT (EVA):.....1,0 / 2,0 / 3,0 / 4,0mm

MILKY (PP):.....0,6mm



Plates for whitening



sSports protectors



Plaques for bruxism



Bicolor plates for mouth guard



PlastPress

Top 3 in the world in vacuum machines, now with pressure option.

The most compact on the positive pressure laminator market, the PlastPress guarantees greater fidelity in copying and lower noise compared to vacuum machines.

Must be connected directly to a compressor regulated at a pressure between 3 and 8 bar (43.5 to 116 psi)

Practical and versatile, it allows the manufacture of trays of different materials up to 6mm thick and accepts round and square plates.



Best Cost x Benefit
of the market
pressure laminators



Carbon Resistance
for a warm up
fast and uniform.



For all
specialties
dental



Door Model: function
Plana and Mug that
avoids distortions and
facilitates model
removal.

LAUNCHING ELITE CLOUD

Control and monitoring of cycles in one place!

Modern technology that aims to facilitate access and organization of the data, certifying the efficiency of the process and pointing out preventive indicators.



3 years of
Guarantee

<https://stomshop.pro/>



PIONEER
WITH
CLOUD
CONNECTION

COMPACT OUTSIDE SPACIOUS INSIDE

17 AND 21 LITERS

Optimized design enabling the sterilization of surgical kits among others.

The ideal size for your dental office!



drying of Closed door



- Steam drainage system with thermal control that guarantees an efficient drying without damaging the packaging and autoclaved materials.



Easy Operation



- Completely automatic pre-programmed cycles.



Durability



- Preventive maintenance indicators;
- Door and tank in stainless steel with a thickness of 2.5mm;
- Monoblock structure with superior quality components, ensuring greater durability and reducing the incidence of oxidation.



Comes with 2 trays:
1 large and 1 small



Holds up to 4 trays
with vertical support



Comes with support for
packaging

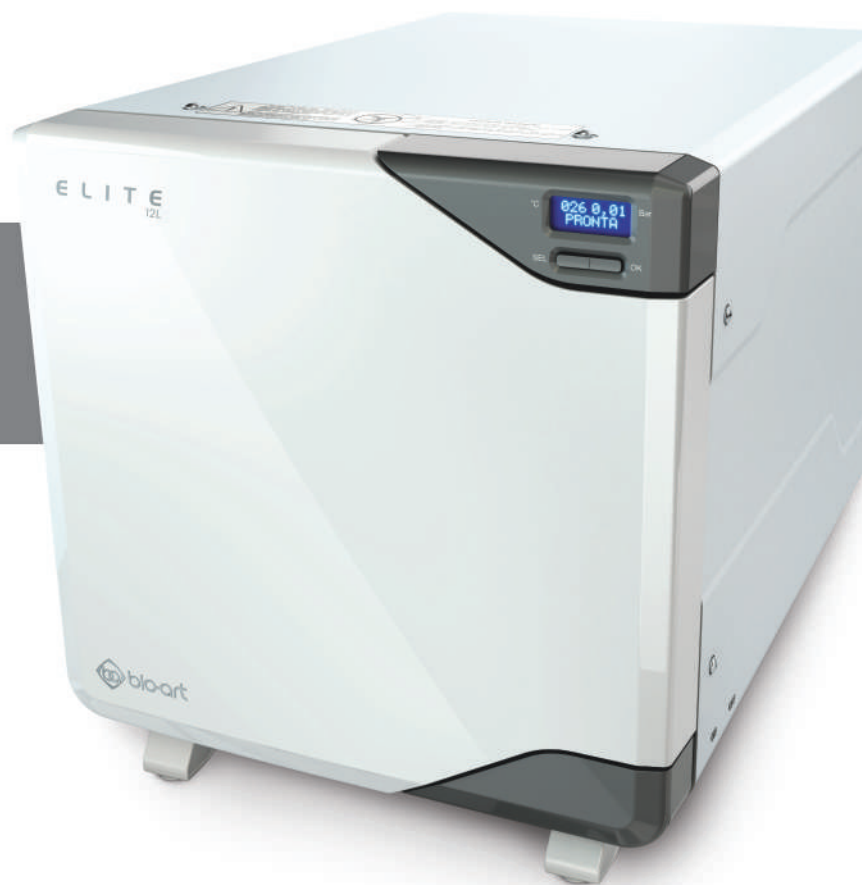


LOW INVESTMENT HIGH QUALITY

COST X BENEFIT

12 LITERS

- ✓ Stainless steel tank;
- ✓ Thermal insulation with lower heat dissipation;
- ✓ Efficient door ajar drying;
- ✓ Completely automatic pre-programmed cycles;
- ✓ Preventive maintenance indicators;
- ✓ Structure and components of greater durability and safety;
- ✓ Comes with 2 trays and holds up to 3.



TECHNICAL CHARACTERISTICS

Sterilization	121°C / 1.15Bar / 20min. and 134°C / 2.15Bar / 10min.
Display	Illuminated LCD (blue)
Drying Mod. 17 and 21L	Closed door
Drying Mod. 12L	ajar door
External dimensions all Mod.	35.3 x 36.8 x 51.8cm (WxHxD)
21L tank dimensions	24.8cm Diameter x 41.8cm Depth
17L tank dimensions	24.8cm Diameter x 36.2cm Depth
12L tank dimensions	21.5cm Diameter x 35cm Depth
Thermal insulation	Ceramic fiber blanket with efficiency of 1,200°C
Security	Mechanical and digital systems
Power	1400w

WATER Distiller

The Bio-Art Water Distiller is one of the fastest on the market (average of 1 liter per hour). With it you will have Distilled Water at will at any time, it will extend the useful life of your equipment and instruments, and you will recover the investment in a short time. Get yours now!

Advantages of using Distilled Water:

- Prevents premature oxidation of equipment and instruments;
- Prevents the formation of limescale in equipment pipes, protecting them from clogging (eg high rotation, triple syringe, ultrasound);
- Prevents the formation of "slime" in the water tanks of the equipment;
- Prevents hoses and valves from drying out;
- Reduces the rate of technical assistance;
- The use in autoclave makes a safer and more efficient process.

Where to use Distilled Water:

- Autoclave;
- Dental chair: high and low rotation, triple syringe and peripherals in general;
- Equipment for prophylaxis: ultrasound and bicarbonate jet;
- Ultrasonic washing machine and instrument washing in general.



- One of the fastest on the market (1 Liter/Hour);
- Reservoir/Bat in stainless steel with a capacity of 4L;
- Power 750w.

BioWash

Optimization and speed in the cleaning process of devices, prostheses and instruments in general. The BioWash Washer allows cleaning in difficult to access regions, removal of organic and inorganic residues impregnated in the instruments, avoiding premature wear of the cutting wire thereof caused by manual cleaning methods.



- Digital timer;
- Heating system;
- Stainless steel bowl with a capacity of 2.5lts.;
- Ultrasound frequency: 42 KHz;
- Available in 110 or 220 volts.



BioStamp

Modern and practical, it meets the standards and quality norms of the most demanding markets. It has armored resistance, activation through a lever with lock and automatic time control, a system that guarantees uniform heating, effective adherence and prevents paper burning. By customizing packaging in different sizes, BioStamp provides paper savings and better use of space in the autoclave.

- Compact and with an innovative design;
- Accident protection fairing;
- Attached guillotine;
- Support for paper rolls;
- Sealing width: 12mm;
- Sealing length: 300mm;
- Available in 110 or 220 volts.



Smart

With an innovative design and excellent cost-benefit ratio, the Smart sealer uses the same BioStamp technology.

- Armored resistance: no armalon;
- Attached guillotine;
- Sealing width: 12mm;
- Sealing length: 300mm;
- Available in 110 or 220 volts.



SurgicalPaper

- Material savings;
- Triple side sealing;
- Chemical indicators.

Width x Length

50mm x 100mts	150mm x 100mts.
75mm x 100mts	200mm x 100mts.
100mm x 100mts	300mm x 100mts.



MicroBlaster

Fast and easy to use. It has a carbide tip, promoting a longer service life and precision in blasting. It is effective and recommended in the following applications:

- Micro retentions on dental surfaces and/or on parts to be cemented;
- Bracket cleaning;
- Removal of cement and oxidation;
- Degreasing;
- Crown placement;
- Occlusal fine adjustment.

Optional BioChamber: It has an exhaust system in order to provide greater safety, practicality and cleanliness in the blasting process.



Before after



Before / After



Before / After



BioCámara (optional)



Available with stainless steel body



Mod. Plus: 2 tips interchangeable and autoclavable (90° and 138°)



1 Coupling/Enganche Rápido - 2 Borden - 3 Midwest



Surveyor B2

Made of hard aluminum with a compact design, ensuring durability, low cost and precision in laboratory work. Comes with model holder table and set of standard calibrating tips.



Standard set of gauge tips



Special gauge Kit (optional)



Handpiece support (optional)



Standard table (adjustable)



Trays

Anatomical for the patient and ergonomic for the professional, with smooth, rounded edges, they provide comfort and the necessary retention for a faithful impression. Developed with Premium material (stainless steel with a self-gloss finish), they do not have burrs, grooves or welding slag, allowing effective cleaning and sterilization of the material and avoiding corrosion, increasing its durability.

Supplied in single packs or in kits with 6 or 8 units.



Smooth



Perforated tray



Kits with 6 and 8 units



Magnifying Lenses

Lightweight, practical and with excellent visual performance, the magnifying glass is essential for clinical and laboratory procedures. Manufactured with CR-39 resin, the lenses have protection against UV and IR rays, greater resistance against abrasion and excellent transparency.

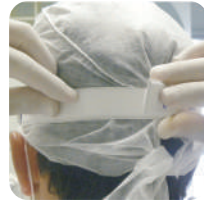
Available in 2.5x or 3.5x magnification.



Great performance visual



Ergonomic design



Custom fit



ProFace

The ProFace with Magnifying Glass Bio-Art is an optical instrument developed to be used in the enlargement of images with the objective of facilitating the visualization and improving the performance of the professional in technical procedures, at the same time being an PPE (Individual Protection Equipment) for having a visor to protect the user's eyes and face against splashes of saliva, liquids, aerosols, dust and particles in general. Its physical characteristics meet international quality standards.

- Ergonomic and lightweight design;
- Practicality of use and hygiene;
- Easy maintenance for changing visors;
- Exceptional transparency;
- Excellent visual performance;
- Lenses with high resistance to abrasion.



Ergonomics and lightness for the professional



Model without magnifying glass



Facilidade para troca das viseiras



Increase of 2.5 or 3.5x



EXPORTING TO OVER
70
COUNTRIES



SOUTH AFRICA - GERMANY - ANGOLA - SAUDI ARABIA - ARGENTINA - ARMENIA - AUSTRALIA - BOLIVIA
BULGARIA - CANADA - CHILE - SINGAPORE - COLOMBIA - SOUTH KOREA - CROATIA - EGYPT - EL SALVADOR
UNITED ARAB EMIRATES - ECUADOR - SPAIN - EST UNIDOS - ESTONIA - PHILIPPINES - FINLAND FRANCE -
GREECE - GUATEMALA - HOLLAND - HONDURAS - HUNGARY - INDIA - IRAN - IRAQ - ISRAEL - ITALY JAPAN -
JORDAN - KUWAIT - LEBANON - LIBYA - LUXEMBOURG - MACEDONIA - MALAYSIA - MEXICO - MOLDOVA
NICARAGUA - NIGERIA PANAMA - OMAN - PAKISTAN - PARAGUAY - PERU - POLAND - PORTUGAL - KENYA
UNITED KINGDOM - DOMINICAN REPUBLIC - CZECH REPUBLIC - ROMANIA - RUSSIA - SERBIA - SYRIA -
SOMALIA SWEDEN - THAILAND - TAIWAN - TURKEY - URUGUAY - VENEZUELA - VIETNAM



Rua Teotônio Vilela, 120 - São Carlos - SP - Brasil - CEP 13568-000
☎ +55(16) 3371-6502 🌐 www.bioart.com.br ✉ bioart@bioart.com.br
📘 facebook.com/bioartequipamentos - 📷 [@bioart_solucoes_inteligentes](https://instagram.com/@bioart_solucoes_inteligentes)

<https://stomshop.pro/>