

EN | NON-ARCON
AVERAGE VALUE
ARTICULATORS

MADE IN ITALY



5050 Plus 5050

ASA DENTAL
MAKE PEOPLE SMILE

www.stomshop.pro



AVERAGE VALUES,
SUPERIOR PERFORMANCES

5050 and 5050Plus are non-Arcon average value articulators designed to help dental technicians meet dentists' requests for high precision, regardless of the prosthetic technique. A light, stable and ergonomic construction facilitates setup and work on any model. Additional features guarantee an exact simulation of the condylar path with a high fitting accuracy, giving prosthesis and restorations the necessary occlusion and function throughout the full range of mandibular movements.

5050

5050 can conveniently work with dentures of many different sizes and any electronic pressure polymerizers available on the market.

Designed to obtain optimal ergonomics, it offers complete stability in the standard working position, when working at 60°, for maximum technician comfort, or rotated upside down, in case of class III edentulous patients. The anti-rotation system for the incisal rod ensures that positioning is always correct and accurate, while the bearing ensures perfect stability in fully opened (reverse) position. The occlusal table and template with clear indication of elliptic references help regardless of the size of the arch and whether starting from upper or lower arches.

FEATURES

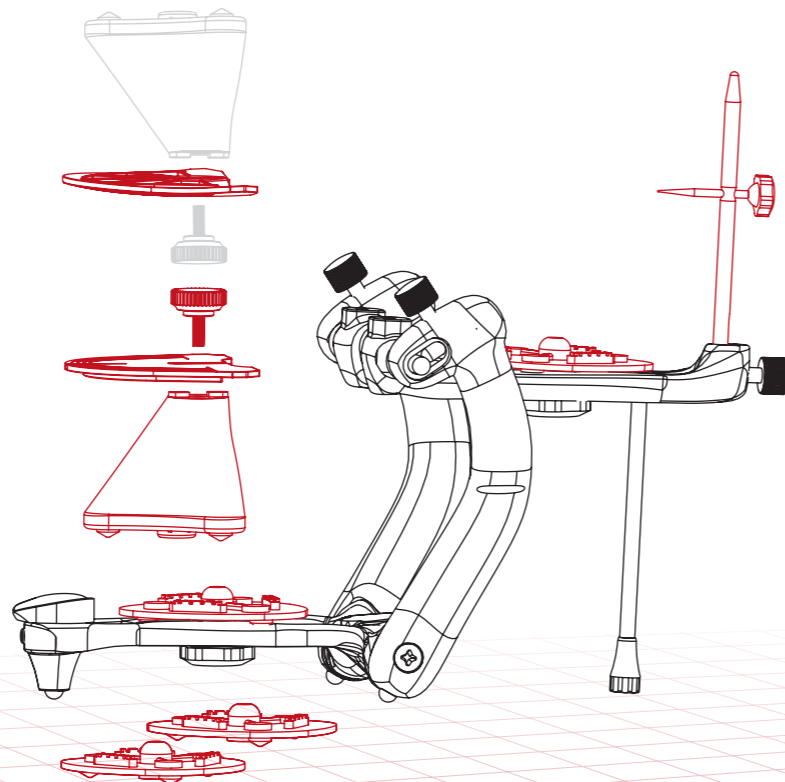
- STABLE 60° OPERATION FOR TECHNICIAN COMFORT
- IDEAL FOR CLASS III PATIENTS
- COMPATIBLE WITH ANY PRESSURE POLYMERIZERS
- ANTI-ROTATION SYSTEM FOR INCISAL ROD
- TEMPLATE WITH 4 ELLIPTIC REFERENCES FOR LOWER ARCH MODELS
- OCCLUSAL TABLE WITH 4 ELLIPTIC REFERENCES FOR UPPER ARCH MODELS

INCLUDES

- INCISAL TABLE @ 10°
- TEMPLATE
- OCCLUSAL TABLE
- SUPPORT FOR TEMPLATE AND OCCLUSAL TABLE
- 2+2 MOUNTING PLATES

TECHNICAL DATA

intercondylar distance	110 mm
condylar inclination	30°
Bennett angle	0° - 7° (with locking screws)
incisal table inclination	10°
distance between mounting plates	87 mm
opening	180°



5050Plus

5050Plus is the most versatile articulator that complements Asa Dental laboratory instruments. Offering all the standard features of 5050, it represents the ideal solution for all the prosthetic techniques with the advantage of the back rod and inclined contrast table that increase operator visibility and ease of use when working on incisors: even without the incisal rod, the adjustable back rod screw keeps correct trajectories and inclinations during lateral and longitudinal movements.

Finally, a magnetic incisal rod safely prevents undesired alteration of the model during cast solidification.

Simple, accurate and ergonomic, 5050Plus represents our best solution for dental technicians asking for a flexible and reliable average value, non-Arcon articulator.

FEATURES

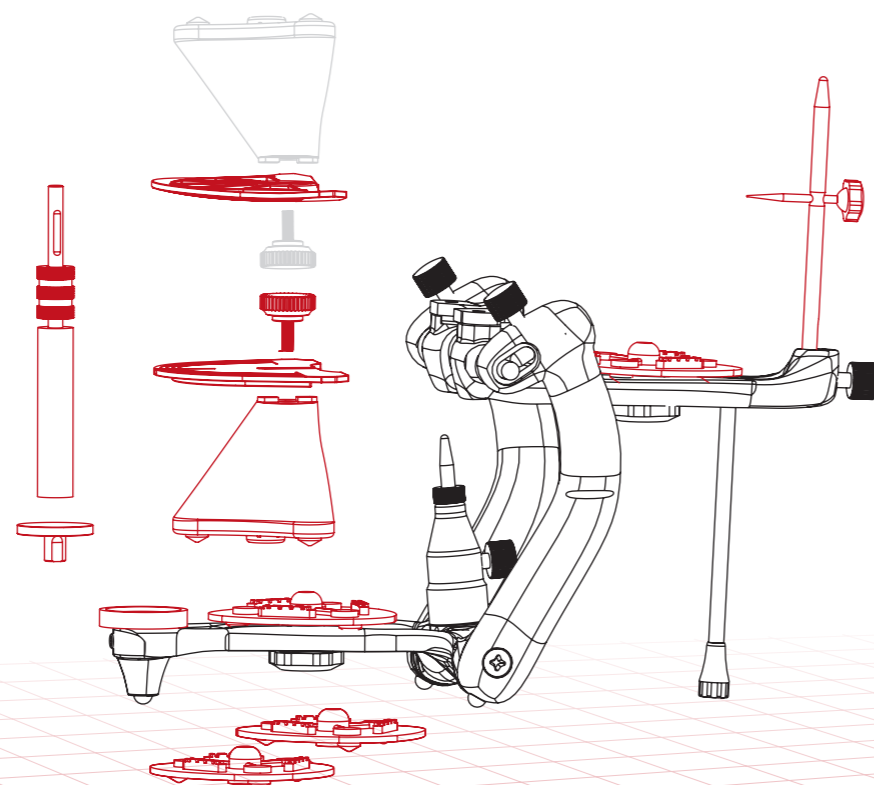
- STABLE 60° OPERATION FOR TECHNICIAN COMFORT
- IDEAL FOR CLASS III PATIENTS
- COMPATIBLE WITH ANY PRESSURE POLYMERIZERS
- ANTI-ROTATION SYSTEM FOR INCISAL ROD
- TOTAL STABILITY WHEN WORKING WITHOUT INCISAL ROD
- TEMPLATE WITH 4 ELLIPTIC REFERENCES FOR LOWER ARCH MODELS
- OCCLUSAL TABLE WITH 4 ELLIPTIC REFERENCES FOR UPPER ARCH MODELS
- MAGNETIC INCISAL ROD FOR TOTAL STABILITY

INCLUDES

- INCISAL TABLE @ 0°
- INCLINED CONTRAST TABLE @ 24°
- BACK ROD SYSTEM
- MAGNETIC ROD WITH FERRULE
- TABLE FOR MAGNETIC ROD
- TEMPLATE
- OCCLUSAL TABLE
- SUPPORT FOR TEMPLATE AND OCCLUSAL TABLE
- 2+2 MOUNTING PLATES

TECHNICAL DATA

intercondylar distance	110 mm
condylar inclination	30°
Bennett angle	0° - 7° (with locking screws)
incisal table inclination	0°
distance between mounting plates	87 mm
opening	180°



HEAD OFFICE

Asa Dental S.p.A.

Via Valenzana di Sopra, 60 - Bozzano
55054 Massarosa (Lu) - Italy
Tel. +39 0584 938305 - 93363 - 938306
Fax +39 0584 937167
asadental@asadental.it
www.asadental.com

LOGISTICS CENTER

Via Sarzanese Valdera, 1331 - Bozzano
55054 Massarosa (Lu) - Italy

PRODUCTION PLANTS

Via delle Piagge, 1/A - Marlia
55014 Capannori (Lu) - Italy

Via Fierla, 13 - Z.I.
33085 Maniago (Pn) - Italy

BRANCH OFFICES

Asa Dental USA Corp.

105 Maxess Road, Suite 124
Melville, New York 11747 - USA

Asa Dental CHINA CO. LTD.

Room 315, Huaying Building,
Zhong Xin Avenue
Tianjin Airport Economic Area
Tianjin - China

Asa Dental S.p.A. (Branch)

Dubai South Business Center
Building C, 3rd Floor
Dubai Logistics City
PO Box 390667
Dubai - UAE



ASA DENTAL
MAKE PEOPLE SMILE

www.stomshop.pro