

R-ONE
TECHNICAL
DATASHEET



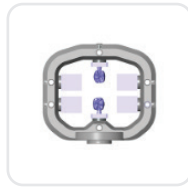
Holder Types



Premill Holder



Glass Ceramic Holder



Multiple Glass Ceramic Holder

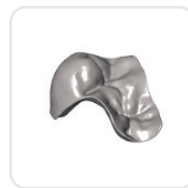
Applications



Prefab Abutments



Crown Bridge



Inlay, Onlay and Veners



Screw Retention Bridge



Denture - Type 1



Denture - Type 2



Surgical Guide



Model Casting



Model



Splint

Material Types

Glass - Ceramic

Premill

PMMA

Composite

Titanium

Zirconia

CoCr

Alumina

Wax

Fiber

Peek

Technical Specifications R-ONE

AXIS MOTOR TECHNOLOGY

Micro Step

SPINDLE SPEED

100.000RPM

SPINDLE POWER

0.75kW

NUMBER OF AXES

4 Axes

B AXIS TILT ANGLE

Endless

MAX TOOL SHAFT DIAMETER

3mm / 4mm

ATC CAPACITY

7

VOLTAGE / FREQUENCY

110v-230v / 50-60Hz

PRESSURIZED AIR REQUIREMENT (L/Min.)

- *

AIR PRESSURE (BAR)

- **

CAM SOFTWARE

Open System

DEVICE DIMENSIONS

306 x 470 x 615 mm

* In Case of Automatic Door: 15

** In Case of Automatic Door: 4