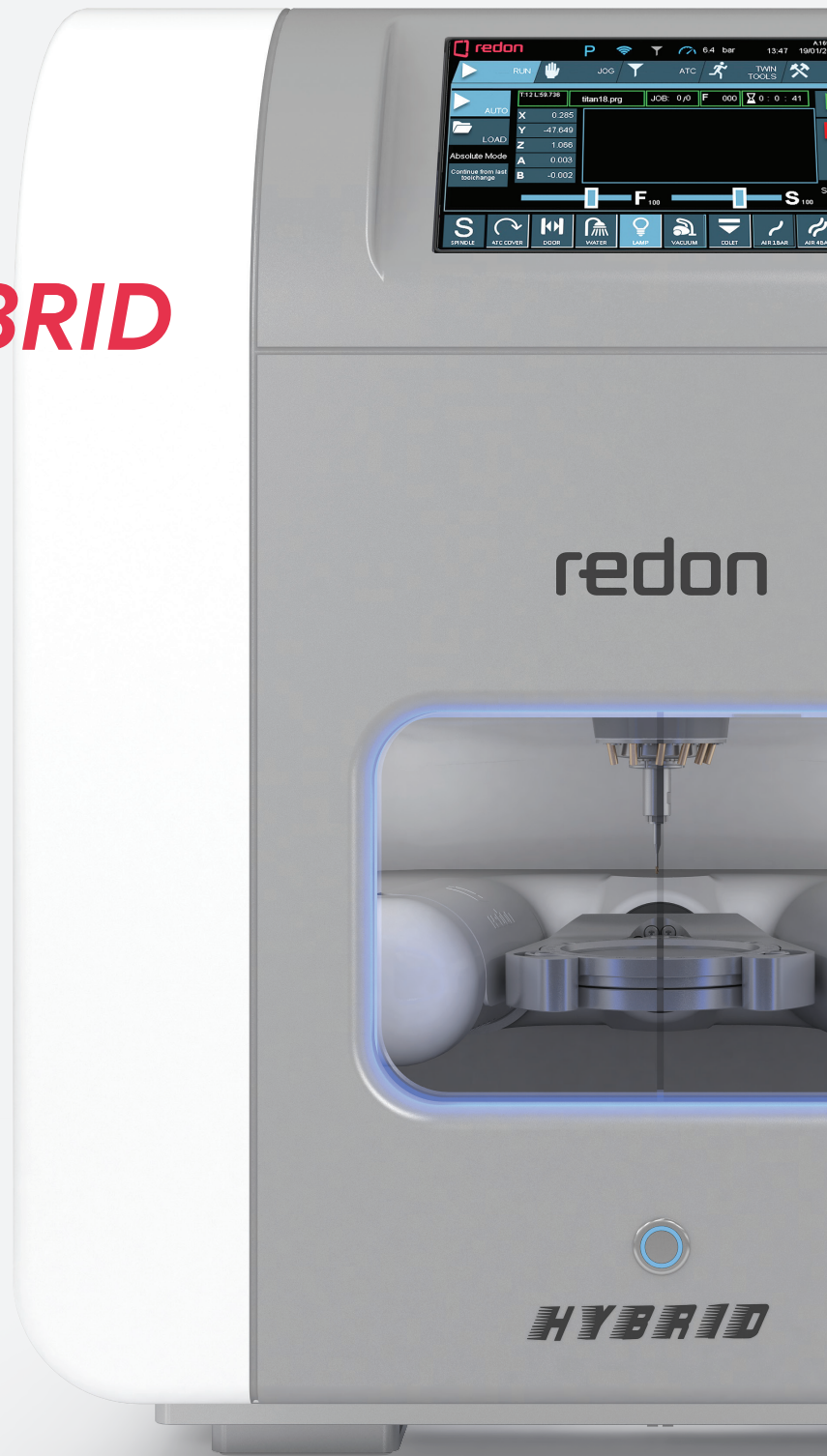


REDON HYBRID

TECHNICAL DATASHEET



Holder Types



Standart Holder



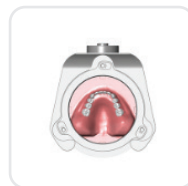
Premill Holder



Glass Ceramic Holder



Glass Ceramic / Premill Holder



Denture Holder

Applications



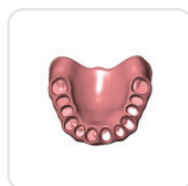
Abutments



Screw Retention Bridge



Crown Bridge



Denture - Type 1



Denture - Type 2



Surgical Guide



Hybrid Abutment



Inlay, Onlay and Veners



Model Casting



Model



Splint



Telescope



Telescope Abutment

Material Types

Titanium

CoCr

Premill

Zirconia

Glass - Ceramic

Composite

PMMA

Alumina

Wax

Fiber

Peek

Technical Specifications **Hybrid**

AXIS MOTOR TECHNOLOGY

Dijital AC Servo

SPINDLE SPEED

60.000RPM / STD

SPINDLE POWER

1.2kW / STD

NUMBER OF AXES

5 Axes

MAX. SLOPE ANGLE OF A AND B AXIS

±30 Degrees

MAX TOOL SHAFT DIAMETER

3 / 4 / 6mm

ATC CAPACITY

12

DRY AND WET MILLING

Yes

REFERENCING MILLING REQUIREMENT

No

VOLTAGE / FREQUENCY

110v - 230v / 50-60Hz

PRESSURIZED AIR REQUIREMENT (L/Min.)

100 L / Min.

AIR PRESSURE (BAR)

6

CAM SOFTWARE

Open System

DEVICE DIMENSIONS

560 x 630 x 650 mm

STANDARTS

Glass Ceramic / Premill Holder, Disc Holder, Zircon Bur Set, Allen Set, Spindle Cleaning Kit, Air Hose, Air Gun, Water Hose, Water Tank
Cutting Oil, Cleaning Brush, Pump, Adapter, Ethernet Cable, Fuses, Usb

OPTIONS

Table, Vacuum Unit, Sinter Furnace, Scanner